

UTRECHT SCIENCE PARK

TOGETHER TOWARDS A HEALTHY, SUSTAINABLE SOCIETY

The Accelerator is a new multi-tenant building for scale-up companies in the Life Sciences who want to accelerate their development.



The Princess Máxima Centre for Paediatric Oncology is the largest child cancer centre in Europe. Its mission is to cure every child with cancer and give them optimal quality of life.

Utrecht Science Park is the **largest** science park in the Netherlands and **the beating heart** of Europe's most competitive region.

Daily **30.000** employees and over **55.000** students.

Companies: 150+ of which 70+ in life sciences and sustainability.

Home to Utrecht University, the Netherlands' **best research university** (Shanghai Ranking, since 2003).

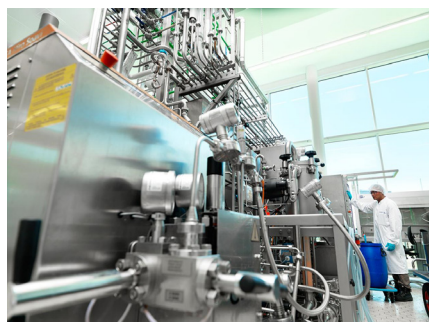
Home to the University Medical Center Utrecht, one of the Netherlands' **largest** public (health) care institutions.

Every day, HU University of Applied Sciences Utrecht students and staff come here to **learn, work and research** in order to improve as professionals.

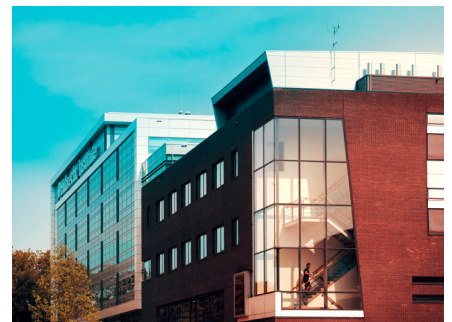
Schiphol, the European airport offering the largest number of direct connections, can be reached by train from Utrecht in 30 minutes.



The international biotechnology company Genmab is specializing in the creation and development of differentiated antibody therapeutics for the treatment of cancer. It is the second largest biotech company in Europe calculated by market value.



Danone Nutricia Research is a Research and Development centre for Danone located on Utrecht Science Park. At this centre, science and technology experts do breakthrough research into nutritional solutions for infants and children, their parents, patients and the elderly.



The Hubrecht Institute is world-leading in stem cell research and organoid technology.



The National Institute for Public Health and the Environment and the Dutch Medicines Evaluation Board work to promote and safeguard health for humans and animals and a healthy living environment. The building is expected to be completed in 2025.



3.000 students live in the five student dorms at Utrecht Science Park.

Around **25.000** people per day arrive **by bicycle** at Utrecht Science Park.

Architectural paradise: the Educatorium by Rem Koolhaas, the University Library by Wiel Arets and the Minnaert Building by Neutelings Riedijk are featured in the book '1001 buildings you must see before you die'.

The Utrecht Science Park has a great network for startups and SMEs including: UtrechtInc and the Life Science Incubator for starting and growing companies in life sciences.



Utrecht Science Park has the longest rainbow bike path in the world.



The Botanical Gardens are a green gem at the heart of the Utrecht Science Park. While these gardens were established for teaching and research, they are also a favourite among visitors. It is home to 9,500 different species of plants in total.

Utrecht Science Park is unique in that it has a climbing wall on one side of a P+R multistorey car park.



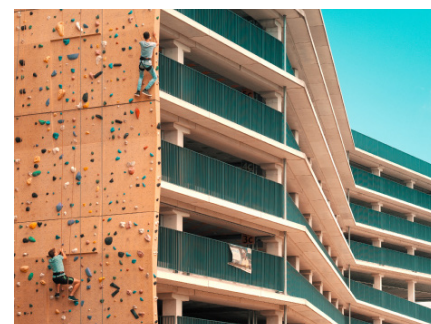
This is the garage of UtrechtInc, a co-working space for start-ups, researchers, businesses and students to experiment with innovative start-up concepts. UtrechtInc is in the global top 10 of university-linked incubators.

The start and finish of the **Utrecht Marathon** powered by **Utrecht Science Park** take place here.

The **Johanna student housing tower** is tiled with over 250.000 tiles, made by the oldest company in The Netherlands.

Another feature of Utrecht Science Park is the **Denver House**. Students are developing a house which is self-sufficient, modular, affordable, attractive and built using circular materials.

The Utrecht Marathon at Utrecht Science Park.



Utrecht Science Park features a wide range of food outlets. As well as fixed locations in the buildings, there are four food trucks that rotate around four locations.



Utrecht Science Week is held every year, with the theme of 'Together towards a healthy, sustainable society'.



The finish of La Vuelta cycling race was at the Utrecht Science Park on 20 August 2022.



Utrecht Science Park and in the background satellite location Utrecht Science Park Bilthoven.

UTRECHT SCIENCE PARK